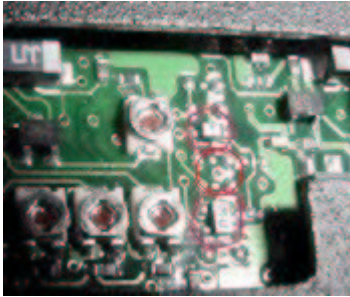


ICOM IC-E90 TX/RX range expansion

To extend actual RX range to full RX range and to enlarge the actual TX ranges, apply this modification :

- extract the battery pack
- take off the black plastic cover with a small hole on the right. Use for example a needle to pull this plastic cover which is just glued.
- A part of the printed board appears, showing four variable components (resistors or capacitors ?).
- On the right side of these 4 variable components, some small surface-mounted components (1, 2 or 3 depending on your country) are soldered in a vertical row. Unsolder these small components using a very thin solder iron and a large lens.
- That's all folks !



Warning, this modification is not authorised in France !